

越前 加賀

ECHIZEN · KAGA



TAIPEI
HONG KONG
SHANGHAI
SEOUL

**ECHIZEN
KAGA**

KAGA
AWARA
SAKAI
EIHEIJI
KATSUYAMA

KANAZAWA



KOMATSU

TAKAYAMA



Bullet train



HANEDA

TOKYO

NAGOYA

KYOTO



Express train

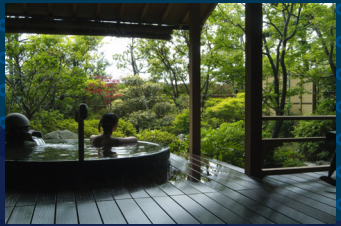
OSAKA



Miyadani Quarry Ruins

SIGHTSEEING SPOT

Quarrying began around 1887 (the 20th year of the Meiji era) but after World War II, as cement became widely used as a building material, the demand for stone rapidly declined, and the quarry was abandoned. If you are lucky, you may catch a glimpse of the emerald-green pond. Visitors can also enjoy forest bathing here, offering a refreshing reset for the mind.



Awara Onsen

HOT SPRING

Established in 1883 and known as one of Fukui Prefecture's finest hot spring towns. Today, Awara Onsen is home to some thirty ryokan and minshuku inns, and the town's hot baths and warm hospitality are beloved by travelers. Awara Onsen's 74 different source springs give each hotel and inn unique water characteristics — perfect for enjoying and comparing different baths.



Sake-Bottling Workshop with Write-Your-Own Label (Kondo Liquor Store)

Here, visitors can make their own one-of-a-kind bottle of sake by bottle size of their choice, then filling it with their preferred local sake. Finally, their bottle gets a label made of Echizen washi paper, hand-decorated however visitors might like.



Tojinbo Cliffs

SIGHTSEEING SPOT

The Hokuriku region's finest Natural Spot, nationally designated as a natural monument. The rocky coast was gradually worn down by the rough waves of the Sea of Japan, forming as giant columns of rock with sheer, dramatic cliffs, resulting in spectacular scenery across roughly a kilometer-long stretch of the coastline.



Mikuni Paper Lantern-Making Workshop (Itoya Mikuni Lanterns)

Itoya was founded in 1791 in Mikuni, Sakai City. They are one of only a few paper lantern makers nationwide that handle the entire production process in-house. Here, visitors can experience truly authentic paper-lantern-making, by taking painted washi paper and stretching it over the lantern frame.



Maruoka Castle

SIGHTSEEING SPOT

Maruoka Castle was built in 1576. The tenshu (castle keep) is a valuable building that features old and unique architectural elements. The castle is also considered one of Japan's 100 best cherry blossom viewing spots, thanks to the trees that bloom there each spring.

WEBSITE HERE!



Choshin Nenju Prayer Bead Workshop (Zen no Sato Community-Building Council)

The name Choshin Nenju refers to the practice of making prayer beads (nenju) after calming the heart (choshin) through zazen seated meditation. The beads used for this workshop have been sanctified by real Buddhist monks with sutra readings at Eiheiji Temple, the head temple of Soto Zen Buddhism.



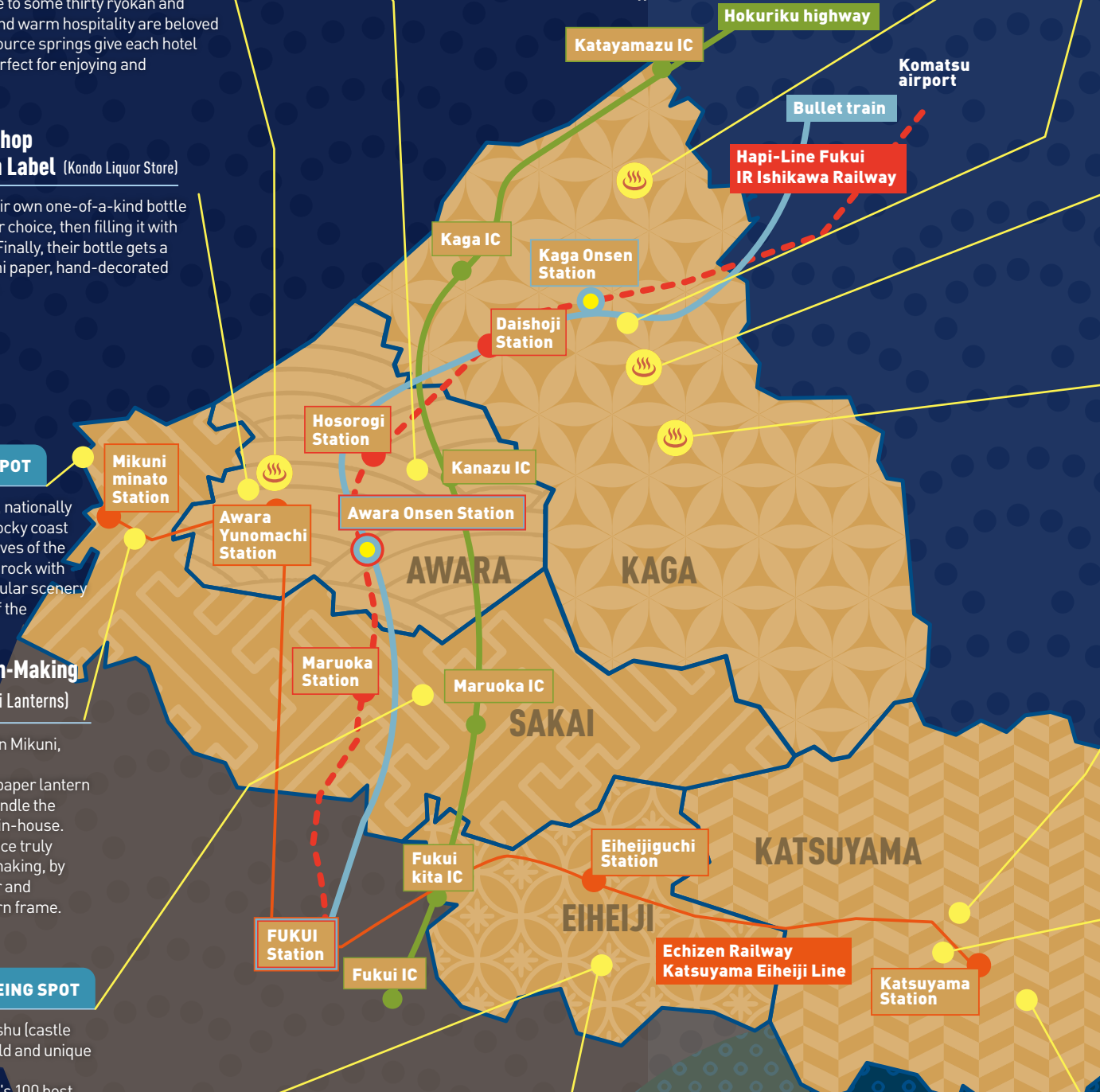
Eiheiji Temple

EXPERIENCE

A Zen Buddhist training temple established by Dogen Zenji. This temple, dedicated to the Soto school of Zen Buddhism, was established in 1244 by Dogen Zenji. The grounds cover more than 33 hectares, with over 70 buildings of varying sizes surrounded by trees up to 700 years old. Even today, Buddhist monks gather here from across Japan to train, and laypeople are welcome to visit and try zazen seated meditation, hand-copying sutras, and other forms of Zen training.

加賀 越前

ECHIZEN-KAGA



Katayamazu Onsen

HOT SPRING

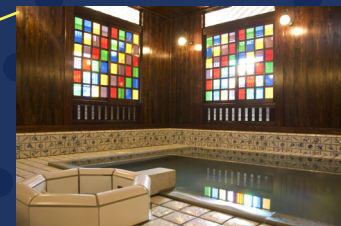
Enjoy beautiful views of the sacred Mt. Hakusan from this lakeside hot spring town. The lake's surface takes on a wide variety of colors over the course of a single day, making this hot spring town the perfect place to enjoy it. The Katayamazu Onsen Soyu Public Bathhouse's glass architecture is stunning.



Kutani ware Painting Workshop (Kutani Mangetsu)

(Kutani Mangetsu)

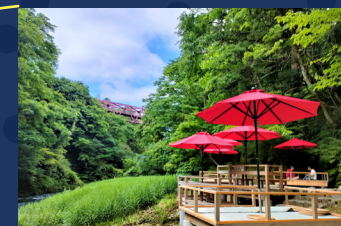
Kutani ware's history dates back to 1655. Kutani Mangetsu offers more than 50 options to choose from when painting your own Kutani ware, from teacups and mugs to vases and plates. There is also a café here, beloved for mixed-rice dishes and sweets — perfect to enjoy after painting your own Kutani ware.



Yamashiro Onsen

HOT SPRING

Writers and artists have long cherished this historic hot spring town. This hot spring area was said to have been discovered in the year 725 by the priest Gyoki, and it has been beloved by many people of culture. The center of the town is home to the newly built Soyu public bath and Ko-soyu, built as a reproduction of a Meiji-era (1868–1912) public bath.



Yamanaka Onsen

HOT SPRING

This hot spring area, surrounded by the natural beauty of the mountains, was established 1,300 years ago. In 1689, the area became popular among travelers and poets. The nearby Kakusenkei Gorge is the most beautiful gorge in the Hokuriku region. With a 1.3-kilometer Walking Path featuring remarkable rock formations, charming bridges, and wonderful scenery through all four seasons.



Fukui Prefectural Dinosaur Museum

SIGHTSEEING SPOT

One of the world's three largest dinosaur museums, it features the domed 'Dinosaur Hall' exhibition room with specimens of dinosaur skeletons and fossils, moving dioramas with realistic recreations of prehistoric life and more. Must-see: reproduction full-body skeletons of the Fukuisaurus and Fukuiraptor, both discovered in Katsuyama.



Woven Silk Luncheon Mat Workshop

(Textile Factory Memorial Museum Yume Oie Katsuyama)

Katsuyama's textile industry got its start with woven silk. After learning about this part of local history at the museum, visitors can even try making their own silk luncheon mats using a hand loom. The silk threads for these are upcycled, coming from items that are no longer in use.



Heisenji Hakusan Shrine

SIGHTSEEING SPOT

Some 1,300 years ago, the monk Taicho established a temple here dedicated to the Hakusan faith. But nearly all of Heisenji was burned to the ground during the Ikko-ikki uprising of 1574. The temple was rebuilt, but as the unification of Buddhism and Shinto was prohibited at the beginning of the Meiji era (1868–1912), the two beliefs were separated and Heisenji became a Shinto shrine.

January

Katsuyama City

Winter Sports

Ski Jam Katsuyama is one of Western Japan's largest ski resorts. Enjoy winter sports from beginners to advanced levels from December to March.



February

Throughout Kaga Echizen

Enjoy Snowy Views & Local Sake

Warm up with delicious local sake, a specialty of this rice-growing region, while gazing at the snow. Hot spring inns offering snow-viewing baths are also available.

March

Sakai City

Maruoka Castle Cherry Blossom Festival

Maruoka Castle, one of Japan's Top 100 Cherry Blossom Spots, features Somei-Yoshino cherry blossoms at their peak. During the festival period, cherry blossoms are illuminated by traditional paper lanterns.



April

Katsuyama City

Echizen Daibutsu Sea of Clouds Special Viewing

A fantastical space unfolds, reminiscent of the legendary "fairy realm" where immortals dwell. Held daily from April to November.

May

Awara City

Forest Art Market

Purchase handmade crafts from various genres and enjoy special experiences, deepening your appreciation for the charm of craftsmanship.

June

Kaga City

Shōbu-yu Festival

Praying for health and safety throughout the year, iris baths (shōbu-yu) with iris added to the water are held at various hot springs.

July

Katsuyama City, Eiheiiji Town

Kuzuryū River Sweetfish & Kuzuryū River Activities

It's the season for wild sweetfish, known for their firm flesh, rich aroma, and deep flavor. On the Kuzuryū River, you can enjoy sweetfish fishing experiences and kayaking.

August

Awara City

Awara Hot Water Splashing Festival

The "hot water splashing mikoshi" procession, where hot water is vigorously splashed onto the mikoshi as it dashes through the streets, is a must-see.



September

Kaga City

Koikoi Festival

Yamanaka Onsen's largest festival features an exciting atmosphere with mikoshi portable shrines being carried around, a giant shishi lion-style portable shrine, and more. Add singing and dancing by geisha and visitors, and you have an unforgettable festival experience.

October

Sunset at Tojinbo

Sakai City

The cliffs, colored by the setting sun, further enhance the solemn atmosphere.

November

Sakai City, Kaga City, Awara City



Snow Crab Season

Echizen-Kaga boasts some of Japan's top snow crab landing ports. From early November to around March, savor local brands like Echizen crab and Kanou crab.

December

Eiheiiji Town

Eiheiiji Temple New Year's Eve Bell Ringing and Illumination

A New Year's Eve event held at Eiheiiji Temple, the head temple of the Soto Zen sect. Visitors can experience bell ringing at Jakko-en Garden.



Departure Point	Destination	Time	Transportation
Komatsu Airport	Katayamazu Onsen	20 min	Kaga Sightseeing Bus (CANBUS)
	Kaga Onsen Station	30 min	
	Fukui Station	1 hour	
Kaga Onsen Station	Katayamazu Onsen	11 min	Hokutetsu Kaga Bus Katayamazu Onsen Line
	Yamashiro Onsen	12 min	
	Yamanaka Onsen • Kakusenkei	30 min	Hokutetsu Kaga Bus Yamanaka Onsen Line
	Awara Onsen Station	16 min	
Awara Onsen Station	Awara Onsen (Get off at Awara Yunomachi Station)	15 min	Keifuku Bus Tojinbo Line
	Tojinbo Cliffs	40 min	
	Eiheiiji Temple	50 min	Keifuku Bus Awara-Marukoka-Eiheiiji Line
	Fukui Prefectural Dinosaur Museum	1 hour	
Fukui Station	Fukui Station	20 min	Hapi-Line Fukui
	Eiheiiji Temple	30 min	
	Tojinbo Cliffs (Includes 40 min walk after getting off at Mikuniminato Station)	1.5 hour	Limited Express Eiheiiji Liner
	Awara Onsen (Get off at Awara Yunomachi Station)	40 min	
	Fukui Prefectural Dinosaur Museum	1 hour	Dinosaur Bus, etc